

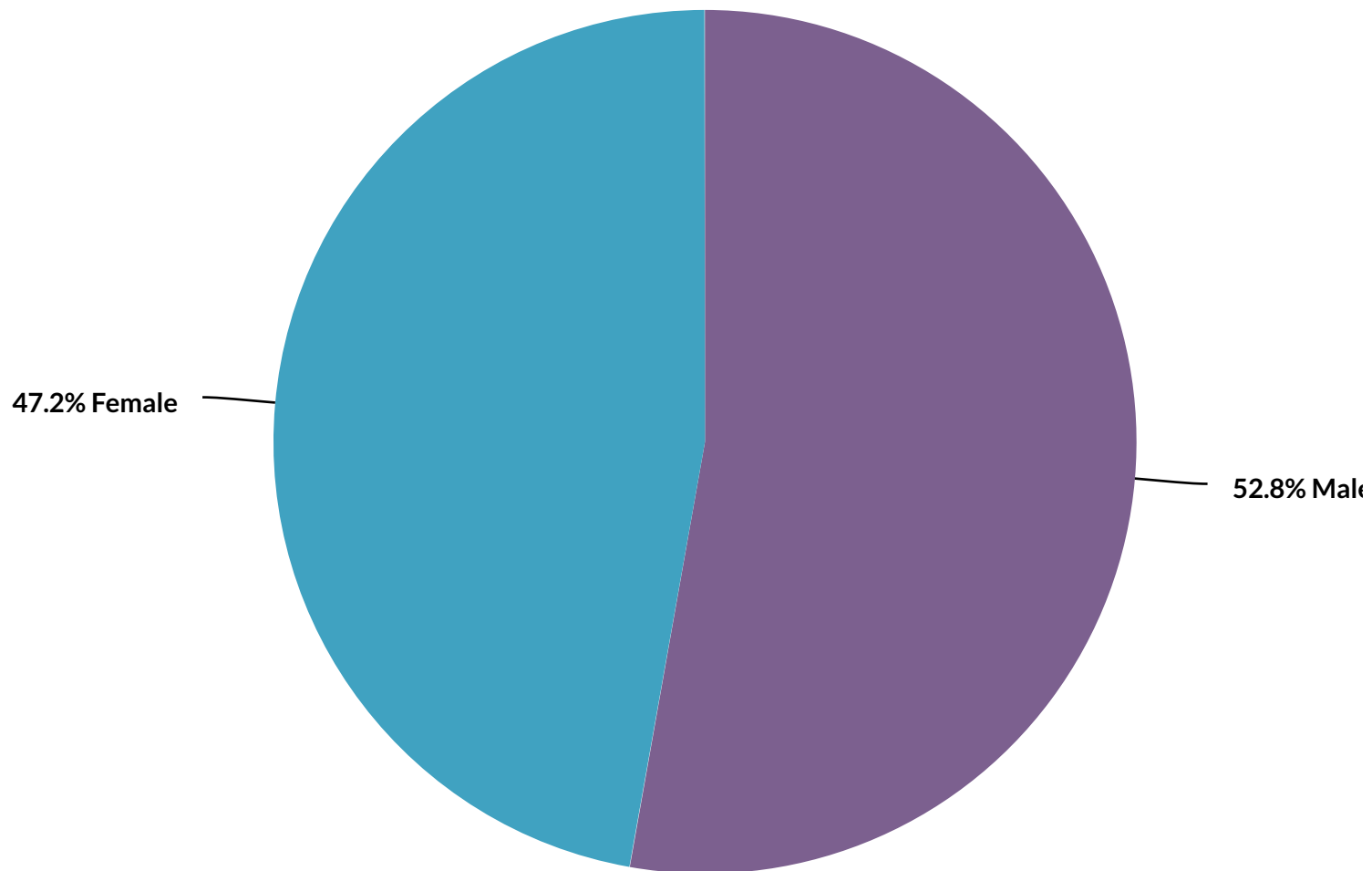


# Report for Amy's List

All Time

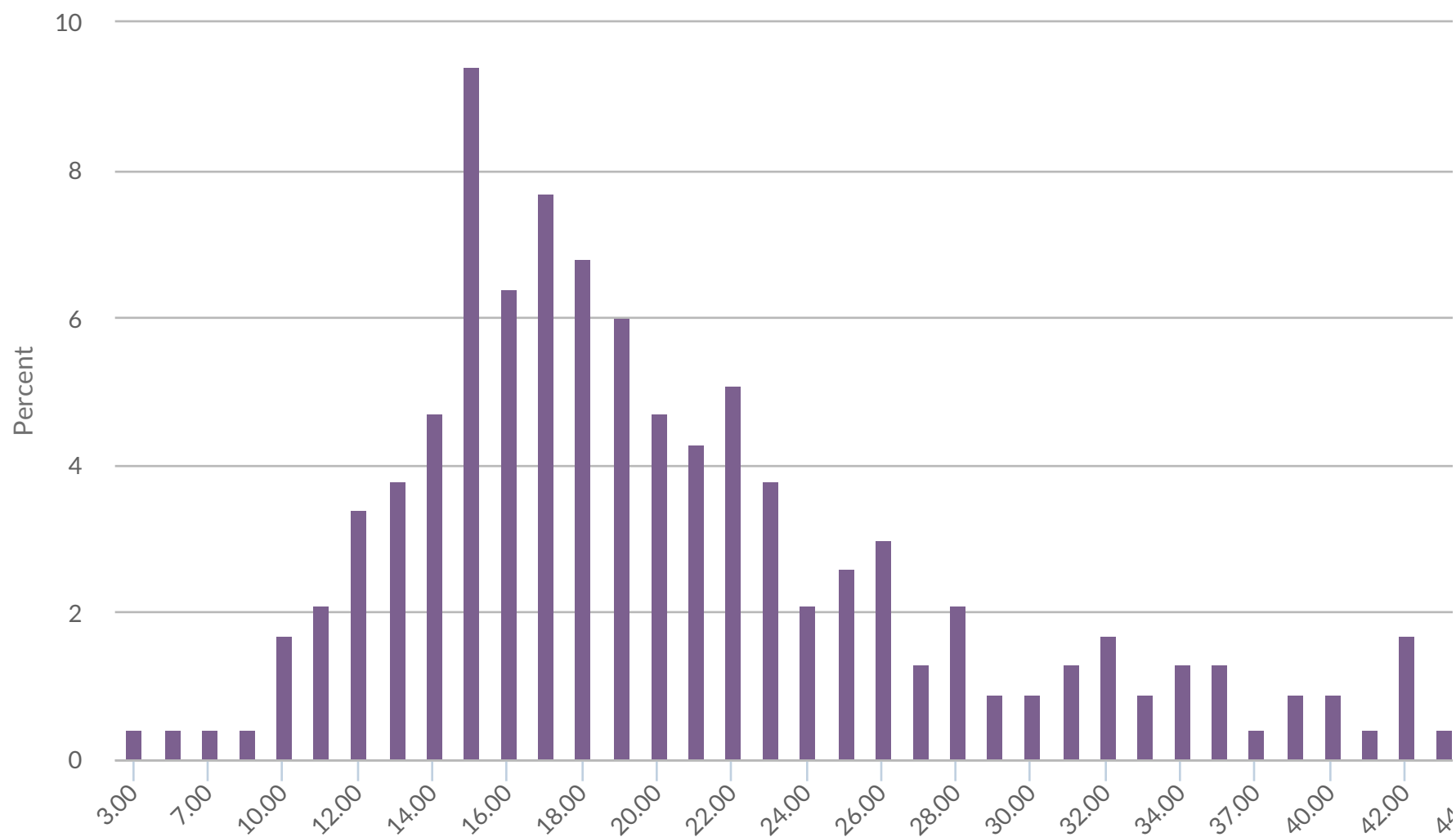
All Time

1. Athlete's gender? (if transgender, please choose birth gender this time)



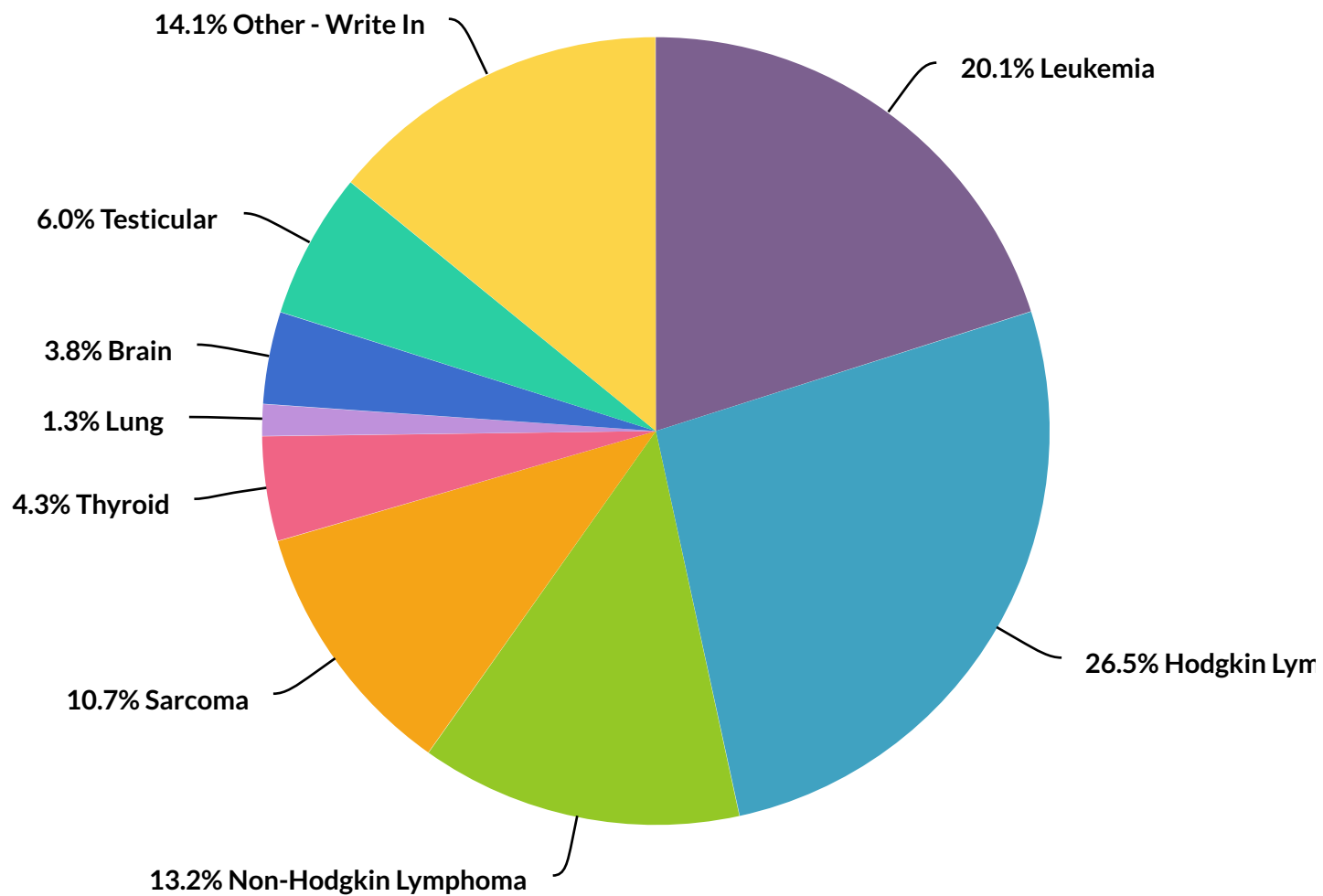
Value	Percent	Count
Male	52.8%	124
Female	47.2%	111
	<b>Total</b>	<b>235</b>

## 2. Athlete's age at diagnosis?



## 3. What type of cancer was diagnosed?

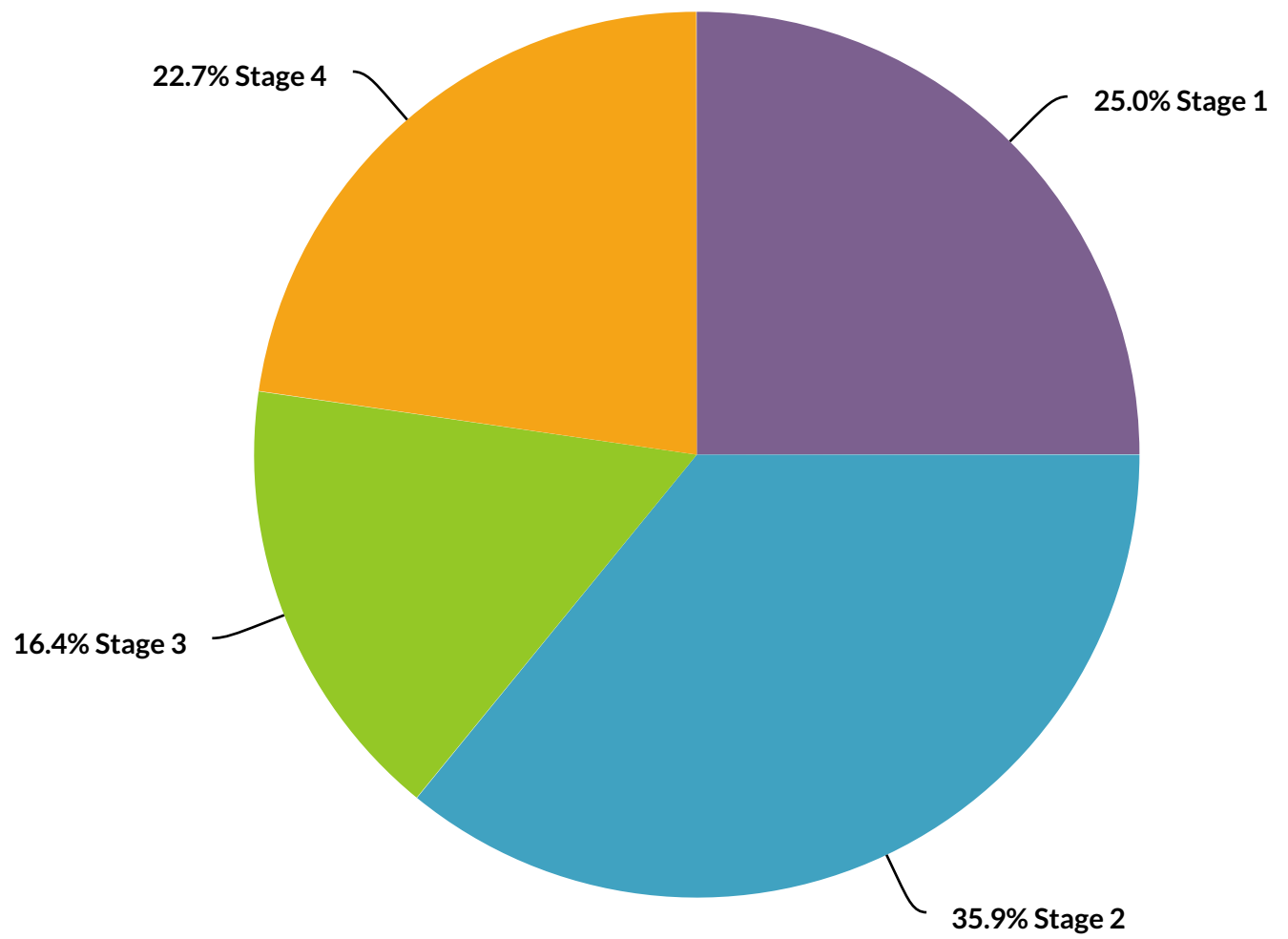




Value	Percent	Count
Leukemia	20.1%	47
Hodgkin Lymphoma	26.5%	62
Non-Hodgkin Lymphoma	13.2%	31
Sarcoma	10.7%	25
Thyroid	4.3%	10
Lung	1.3%	3
Brain	3.8%	9
Testicular	6.0%	14
<a href="#">Other - Write In (click to view)</a>	14.1%	33
	<b>Total</b>	<b>234</b>

#### 4. Cancer stage at initial diagnosis?

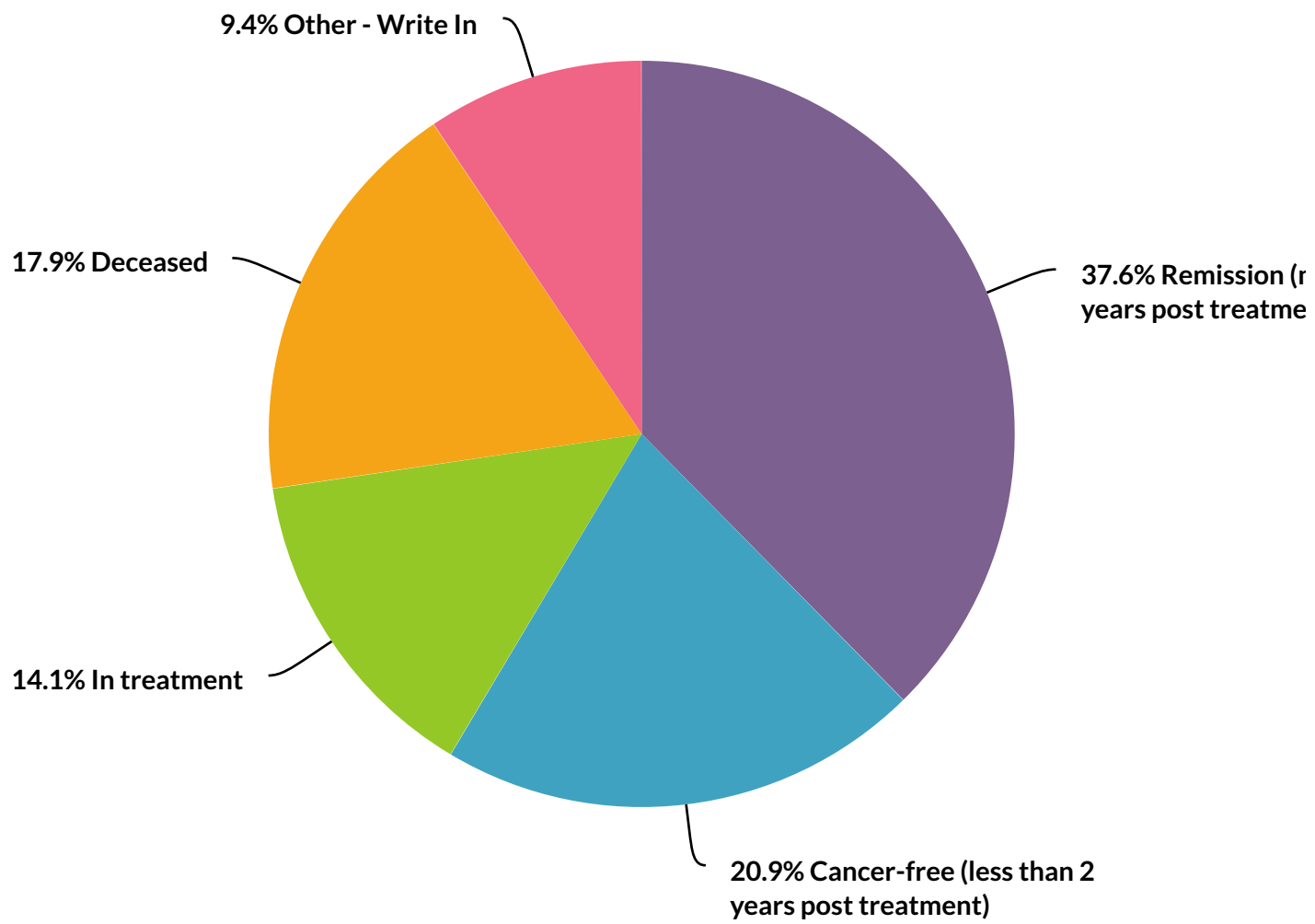




Value	Percent	Count
Stage 1	25.0%	32
Stage 2	35.9%	46
Stage 3	16.4%	21
Stage 4	22.7%	29
<b>Total</b>		<b>128</b>

5. Current health status as it pertains to cancer?





Value	Percent	Count
Remission (more than 2 years post treatment)	37.6%	88
Cancer-free (less than 2 years post treatment)	20.9%	49
In treatment	14.1%	33
Deceased	17.9%	42
<u>Other - Write In (click to view)</u>	9.4%	22
	<b>Total</b>	<b>234</b>

6. Has the athlete experienced a cancer relapse?

Chart Loading

---

7. Primary sport(s) played on synthetic turf? Please select all that apply.

Chart Loading

8. What primary positions were played on turf? Please select all that apply.

Chart Loading

---

9. Please estimate the number of years played on synthetic turf.

Chart Loading

---

10. On average how many months each year have been played on synthetic turf?

Chart Loading



---

11. Including practices, trainings and games, how many hours per week on average have been played on synthetic turf fields during the sport season?

Chart Loading

---

12. Did the athlete continue to play on synthetic turf after cancer diagnosis?

Chart Loading

---

13. Please indicate the highest level of sports participation on synthetic turf.

Chart Loading

---

Powered by

**surveygizmo**

Create powerful surveys and reports with a smile!