

**Cinq exemples de terrains de jeux
synthétiques
et de températures associées par une
image thermique
Landsat 5 (le 27 juin 2005 à ~10:32am)**

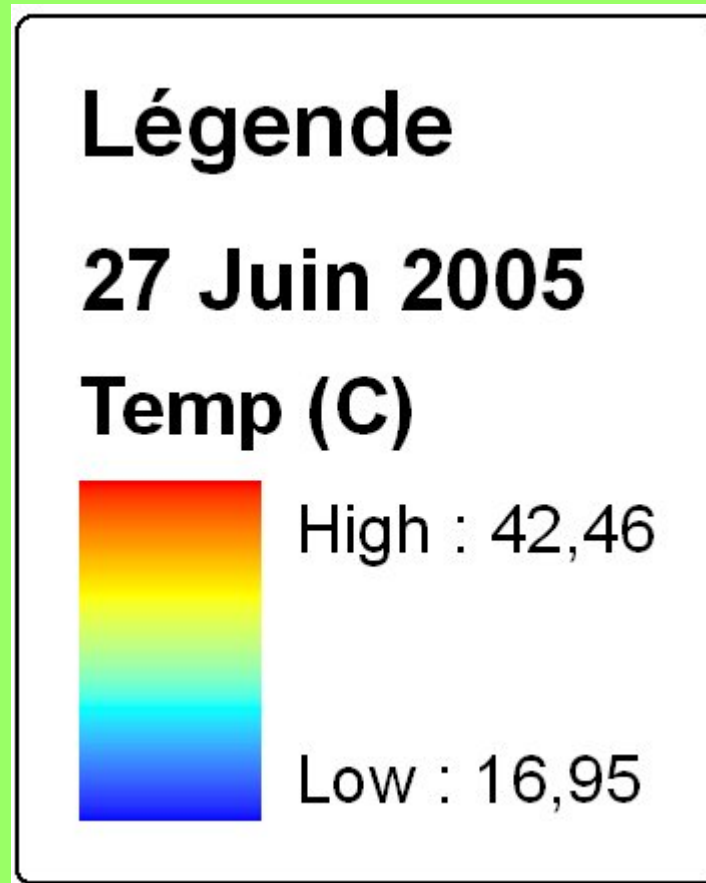
Par Camilo Pérez Arrau
Étudiant de Maîtrise en Géographie
Département de géographie à l'UQÀM
Le 30 avril 2007

**Five synthetic soccer fields and their
surface temperature derived from
Landsat 5
(27th June 2005 at ~10:32 a.m.)**

By Camilo Pérez Arrau
Master Student in Geography
UQAM (University of Quebec in Montreal)
Department of Geography
30th April 2007

Image thermique

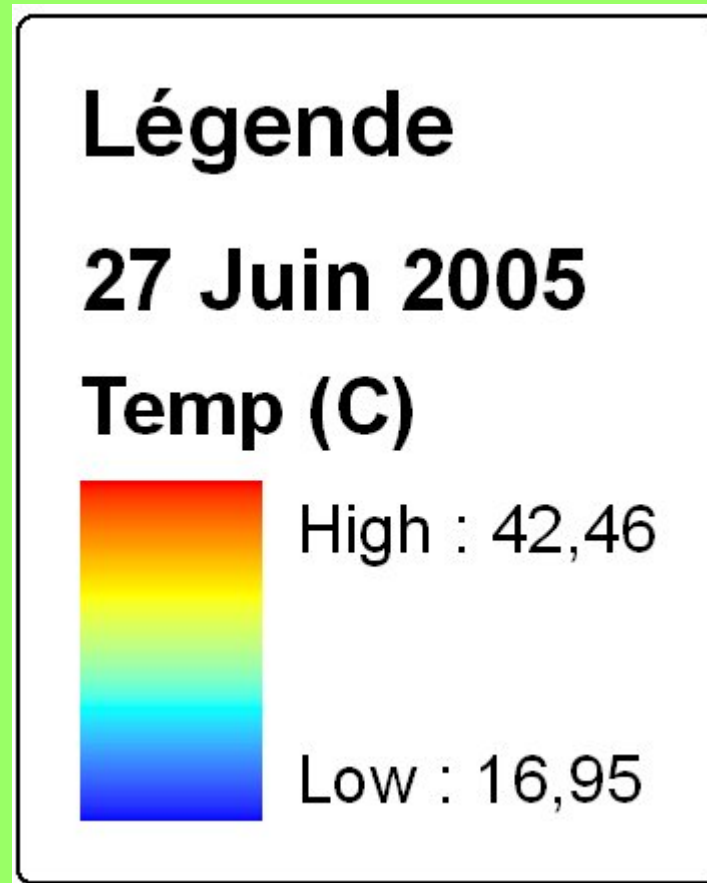
Landsat 5 (le 27 juin 2005 à ~10:32am)*



*Images sans correction atmosphérique

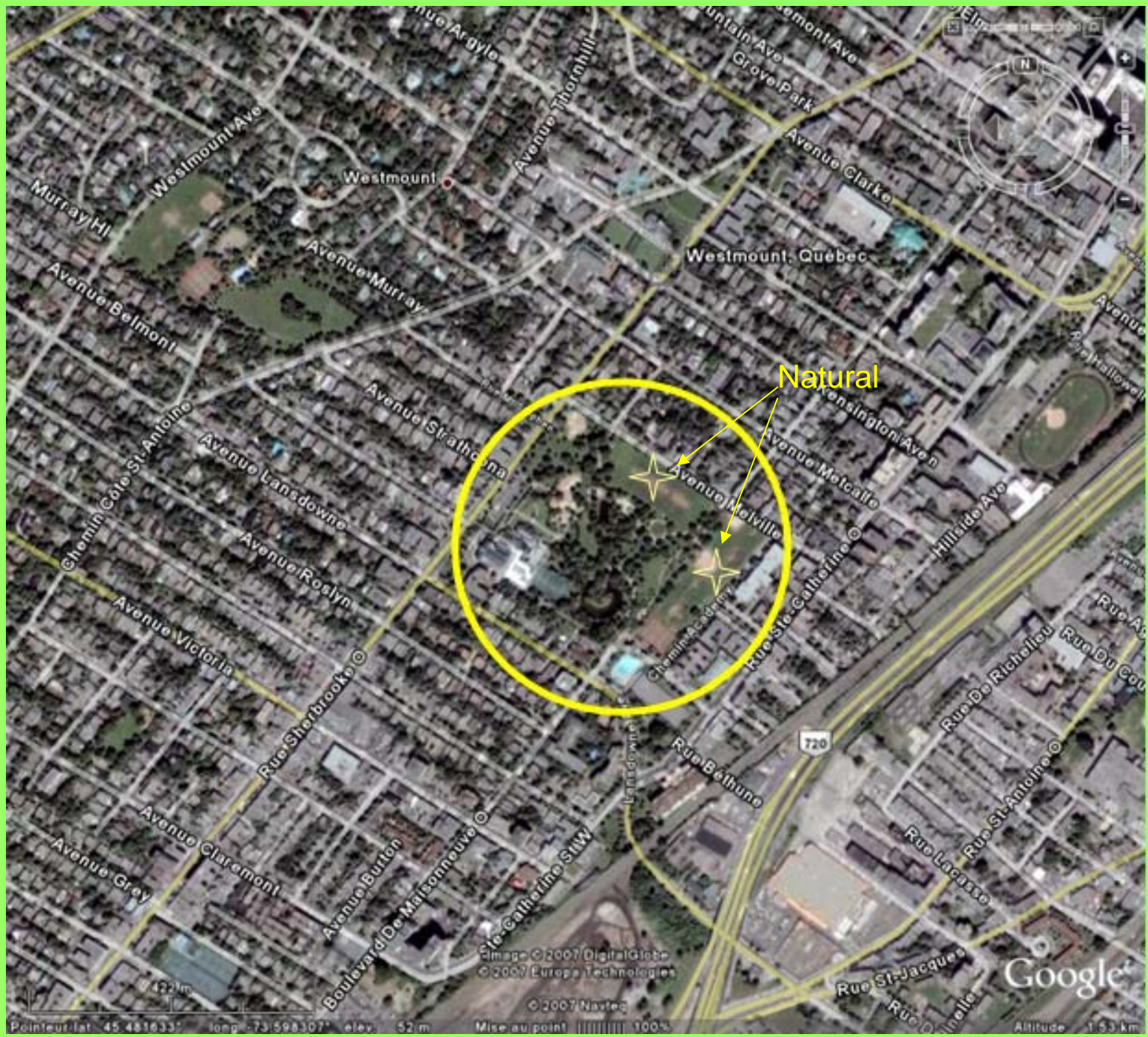
Thermal Image

Landsat 5 (27th June 2005 at ~10:32 a.m.)*



*No atmospheric correction has been applied on these images

Westmount Park



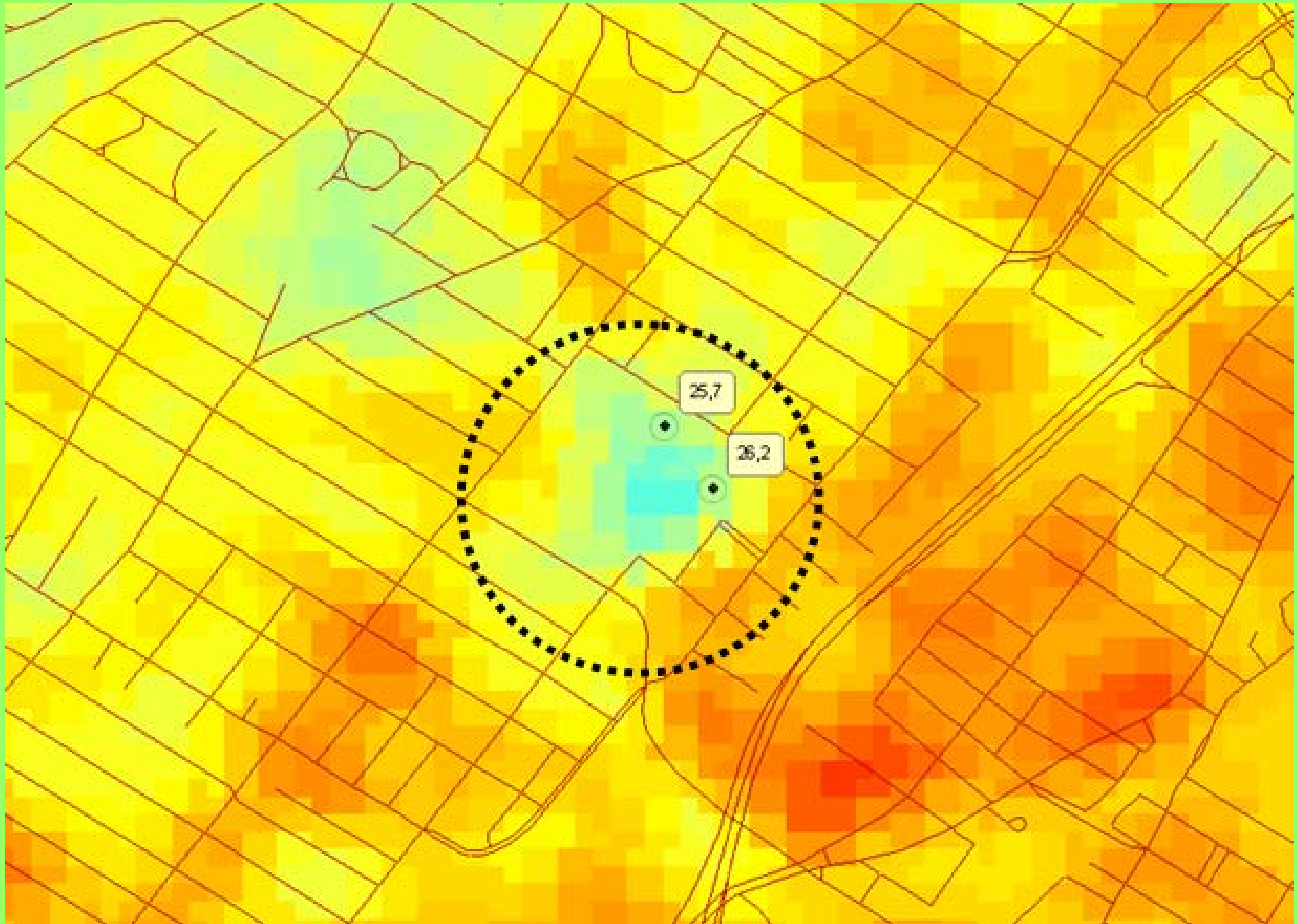
Natural

Pointeur lat: 45.481633° long: -73.598307° elev: 52 m

Image © 2007 DigitalGlobe
© 2007 Europa Technologies
© 2007 Navteq

Google

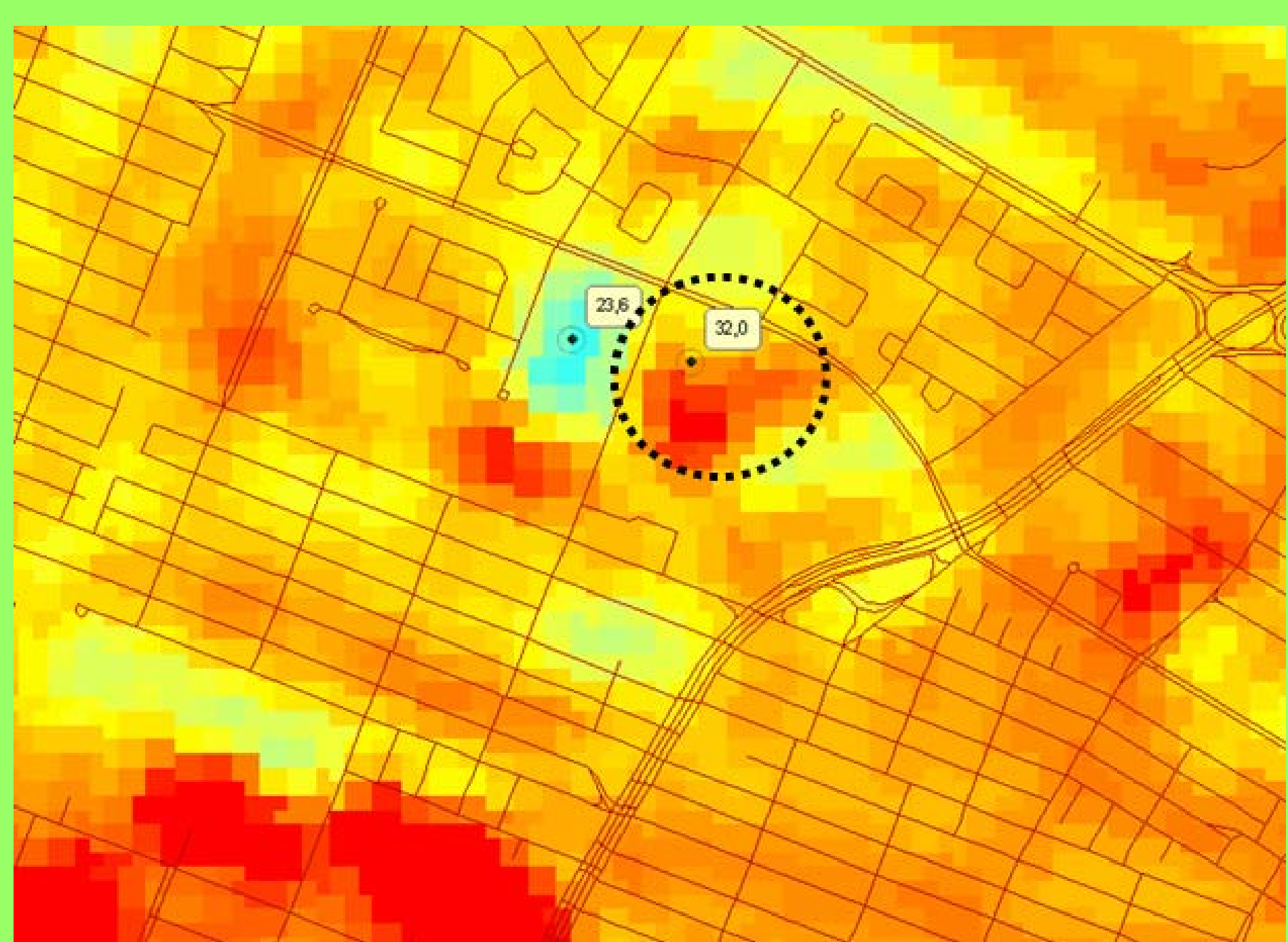
Altitude 153 km



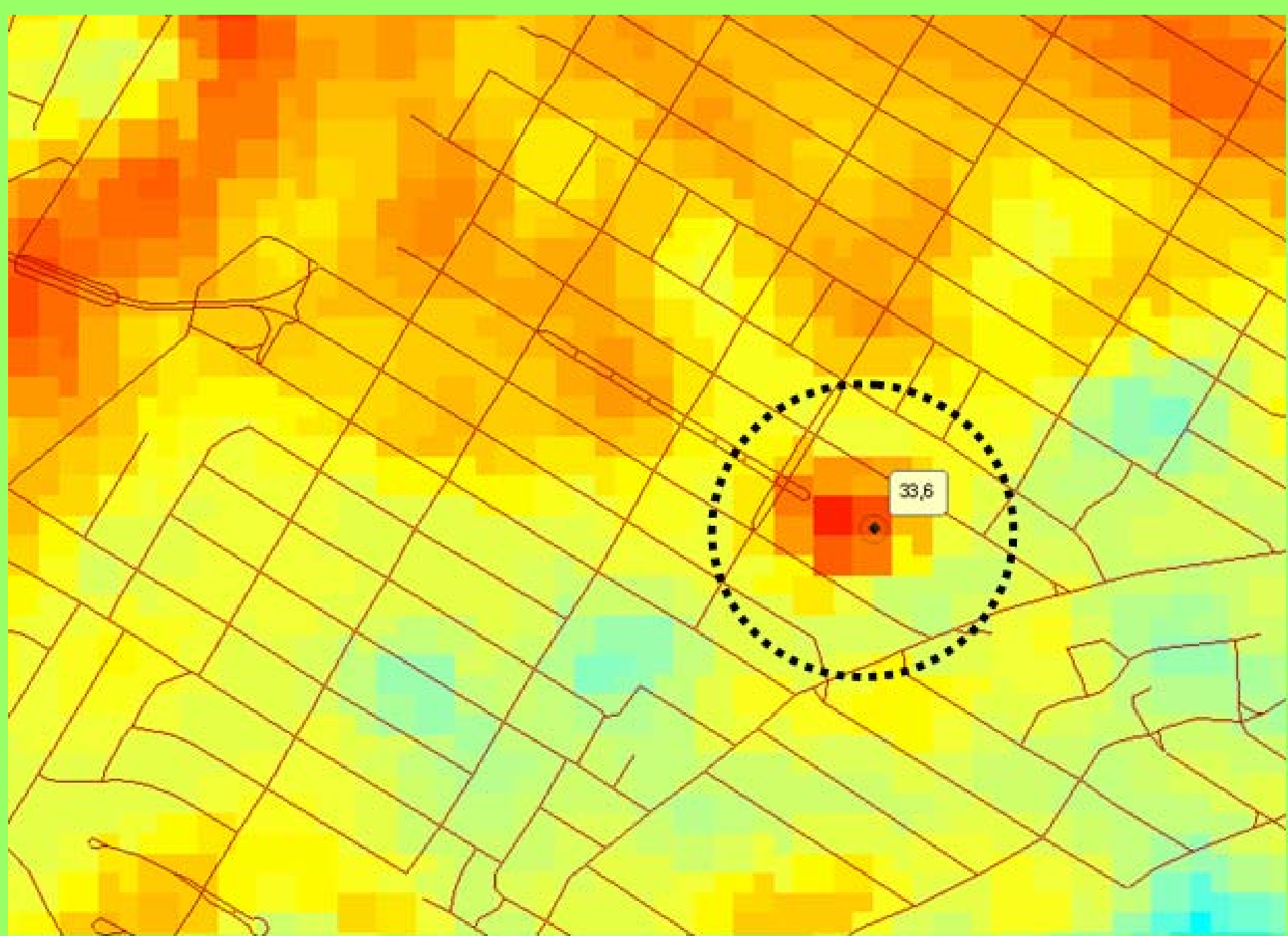
25,7

26,2

Claude Robillard



Parc Beaubien

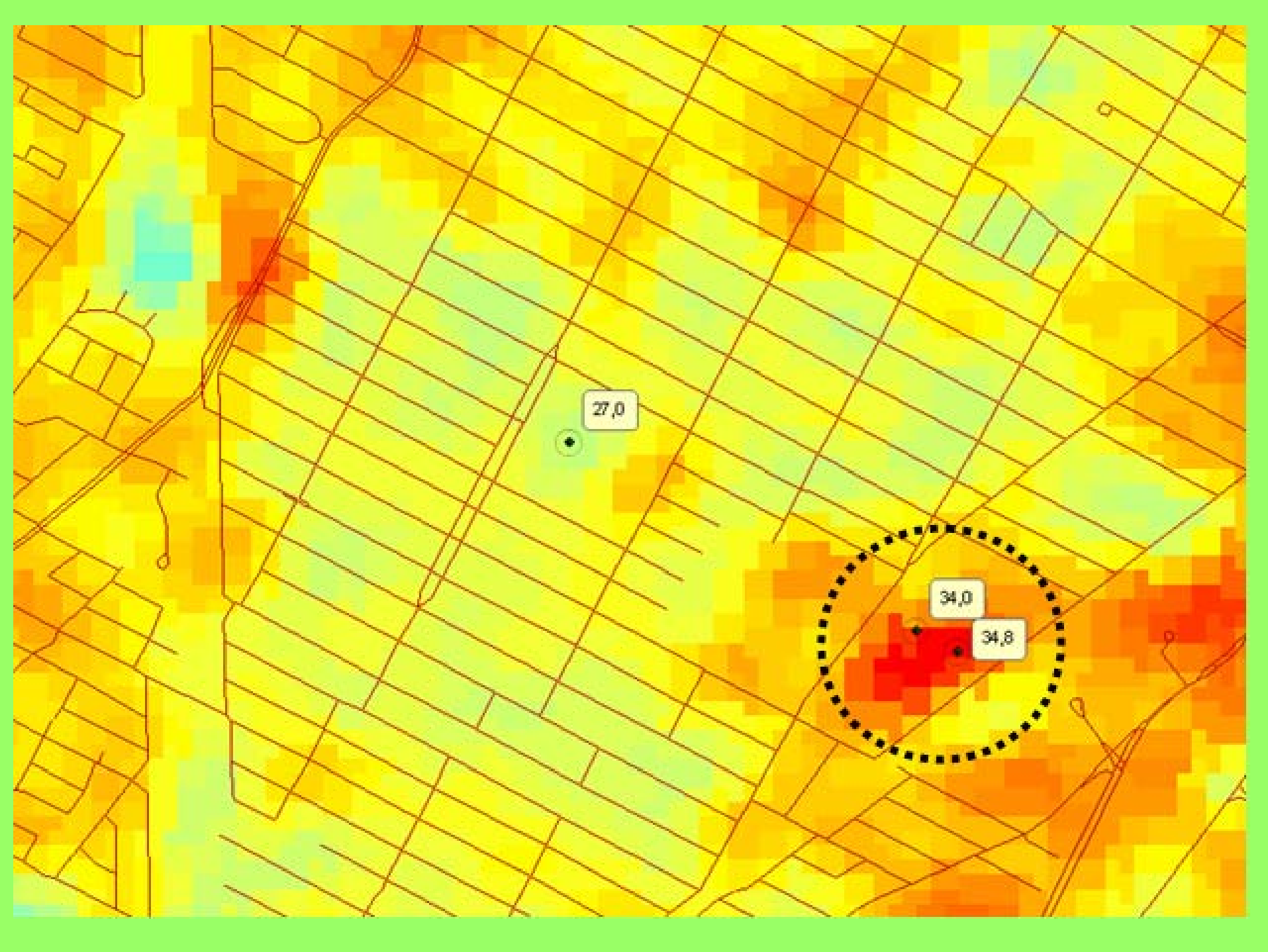


Concordia (Loyola)



Natural

Synthetic



27,0

34,0

34,8

Jeanne - Mance



Natural

Synthetic

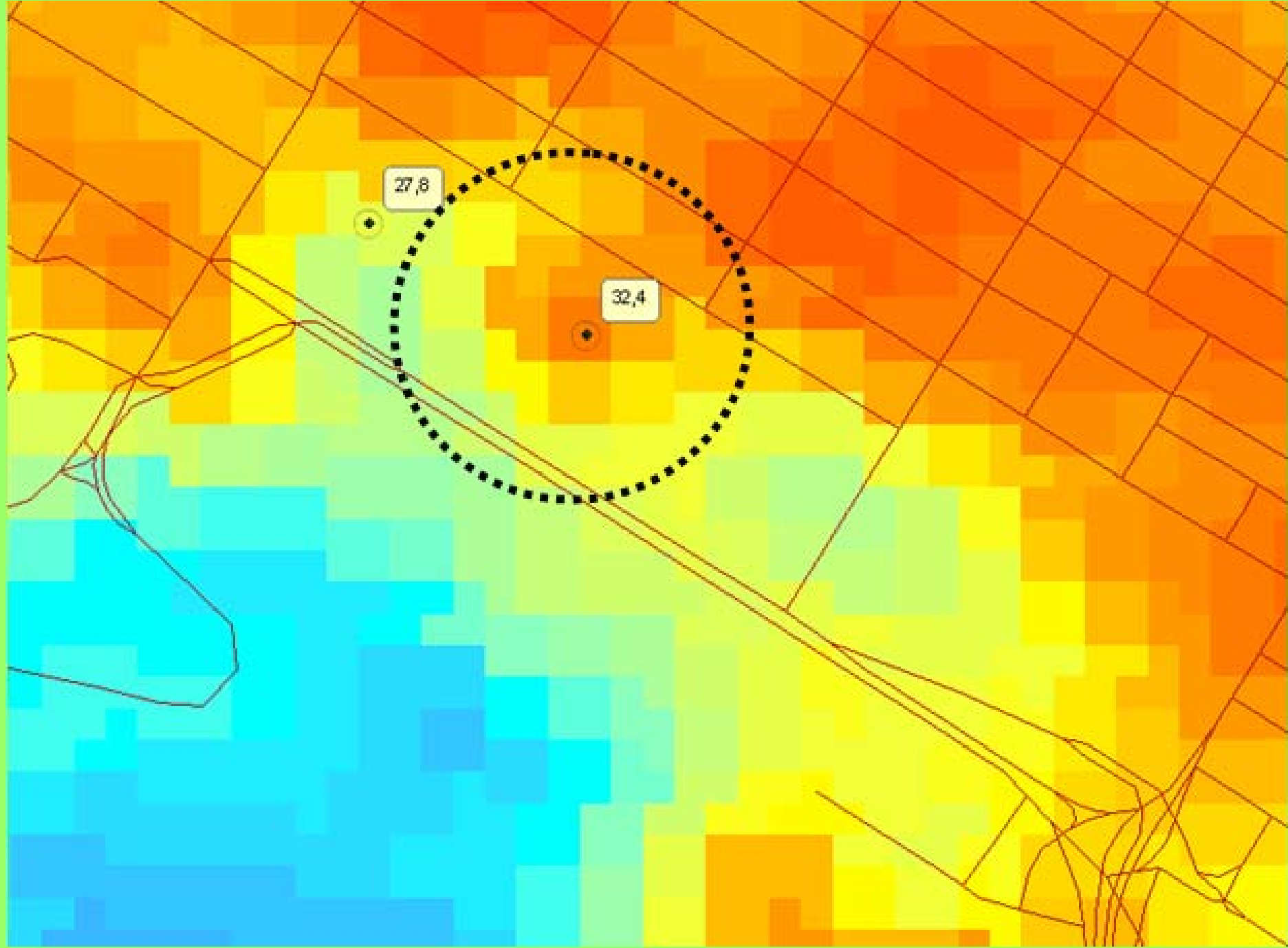
© 2007 Europa Technologies
Image © 2007 DigitalGlobe

Google

288 m
Pointeur lat 45.515118° long -73.583545° elev 81 m

Mise au point ||| ||| ||| 100%

Altitude 1.18 km

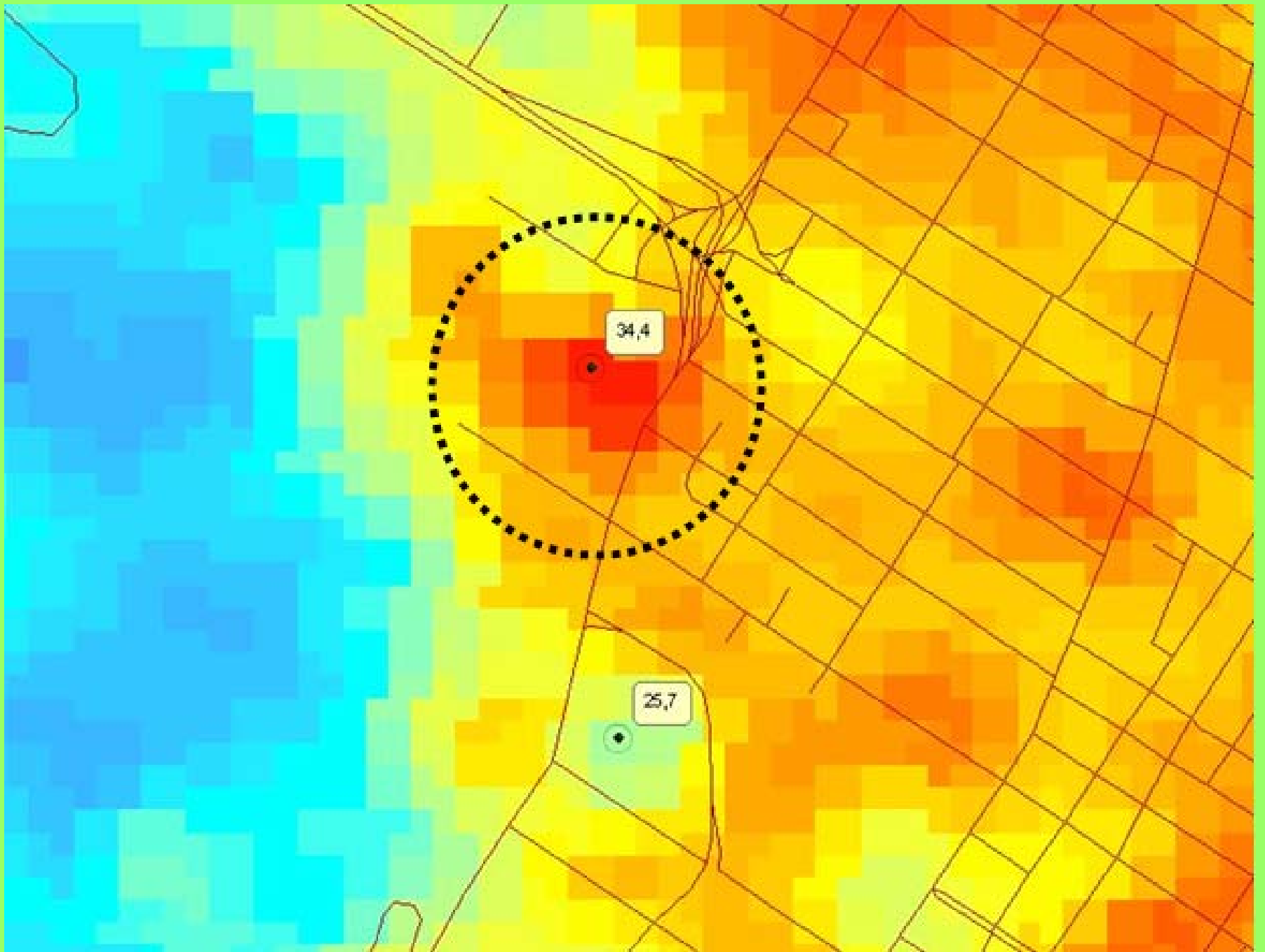


Stade McGill



Synthetic

Natural



Merci
Thank you